

Thermography Inspection Report

Company	BSCS
Author	Brian Sweeney
Date	12th November 2008

General Comments

This Report is an example only of the basic images a Thermal Imaging Camera can produce.

The images vary in quality and accuracy and bear no relevance to the actual report quality BSCS strives to ensure its clients.

Contents

Description	Page No.
Inspection 1 - Joe Blogs	3
Inspection 2 - Joe Bloggs	4
Inspection 3 - Joe bloggs	5
Inspection 4 - Joe Bloggs	6
Summary	7

Inspection 1 - Joe Blogs

Operator	BSCS
Location	Ireland
Equipment	IRISYS 4010

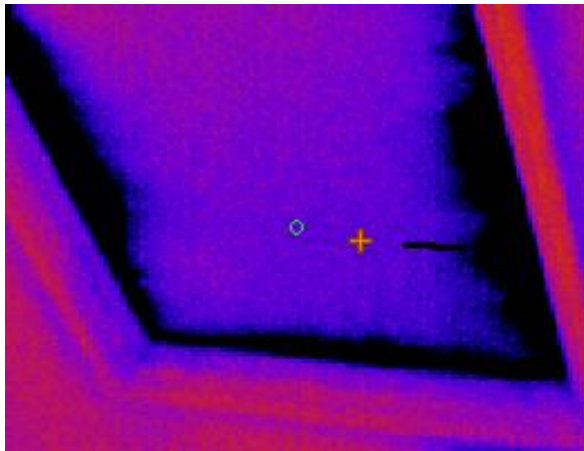
Snapshot

Date	9th January 2009
Time	1.23 PM

Comment

The thermal image clearly illustrates areas of air ingress through an unsealed and uninsulated attic door

Thermal Snapshot



Visual Image



Temperature Measurements

Cursor 2	17.5 °C
Difference	

Measurement Parameters

Emissivity	0.95
Reflected Temp.	17.0 °C
Measured Load	
Rated Load	
Load %	

Fault / Recommended Action

The Attic trap door should be reinstalled with an insulated backing and a suitable draft proof seal

Repair Action

Action	Date	Initials
Inspected		
Repaired		
Reinspected		

Repair Priority
1 Low to 5 High

5

Inspection 2 - Joe Bloggs

Operator	BSCS
Location	Ireland
Equipment	Irisys

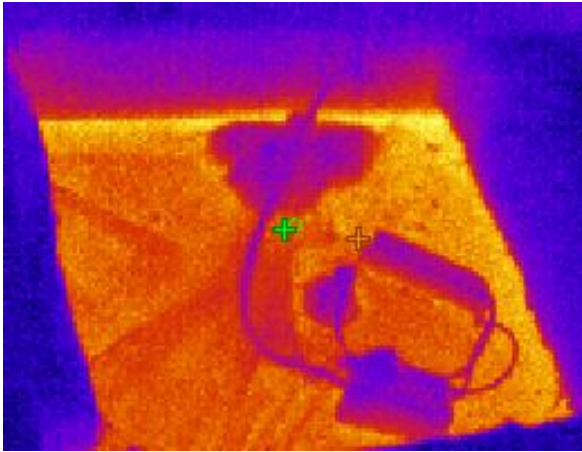
Snapshot

Date	9th January 2009
Time	1.34 PM

Comment

Thermal image clearly shows the heat loss and temperature difference of an uninsulated section in the roof space .

Thermal Snapshot



Visual Image



Temperature Measurements

Cursor 1	9.9 °C
Cursor 2	10.1 °C
Difference	-0.2 °C

Measurement Parameters

Emissivity	0.95
Reflected Temp.	17.0 °C
Measured Load	
Rated Load	
Load %	

Fault / Recommended Action

The tradesmen involved removed insulation to make their job easier. Simply replace the insulation but ensure the light fitting is protected from over heating with a suitable shroud.

Repair Action

Action	Date	Initials
Inspected		
Repaired		
Reinspected		

Repair Priority
1 Low to 5 High

5

Inspection 3 - Joe bloggs

Operator	BSCS
Location	Ireland
Equipment	Irisys 4010

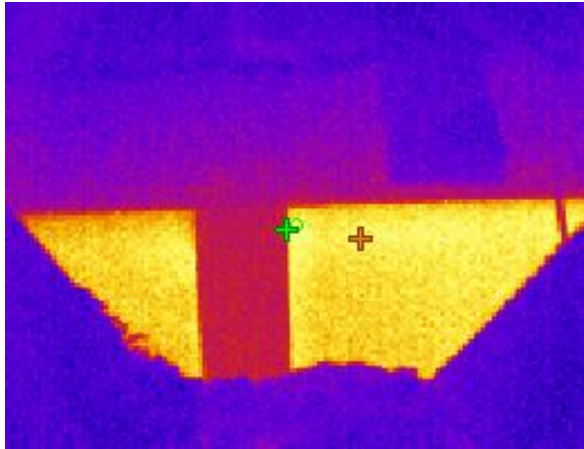
Snapshot

Date	9th January 2009
Time	1.30 PM

Comment

Thermal image clearly hows the heat loss and temperature difference in the attics uninsulated section.

Thermal Snapshot



Visual Image



Temperature Measurements

Cursor 1	12.2 °C
Cursor 2	12.1 °C
Difference	0.1 °C

Measurement Parameters

Emissivity	0.95
Reflected Temp.	17.0 °C
Measured Load	
Rated Load	
Load %	

Fault / Recommended Action

This entire high level section of wall requires insulation to be installed

Repair Action

Action	Date	Initials
Inspected		
Repaired		
Reinspected		

Repair Priority
1 Low to 5 High

5

Inspection 4 - Joe Bloggs

Operator	BSCS
Location	Ireland
Equipment	Irisys 4010

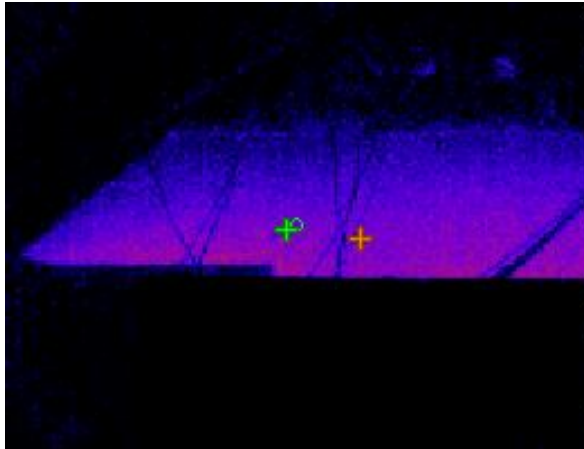
Snapshot

Date	9th January 2009
Time	1.32 PM

Comment

The thermal image shows heat loss through poorly installed sections of insulation.

Thermal Snapshot



Visual Image



Temperature Measurements

Cursor 1	7.1 °C
Cursor 2	7.0 °C
Difference	0.1 °C

Measurement Parameters

Emissivity	0.95
Reflected Temp.	17.0 °C
Measured Load	
Rated Load	
Load %	

Fault / Recommended Action

The exposed concrete wall is exacerbating heat loss through conduction. This wall should be correctly insulated.

Repair Action

Action	Date	Initials
Inspected		
Repaired		
Reinspected		

Repair Priority
1 Low to 5 High

4

Summary

Insp. No.	Location	Equipment	Fault / Action	Priority
1	Ireland	IRISYS 4010	The Attic trap door should be reinstalled with an insulated backing and a suitable draft proof seal	5
2	Ireland	Irisys	The tradesmen involved removed insulation to make their job easier. Simply replace the insulation but ensure the light fitting is protected from over heating with	5
3	Ireland	Irisys 4010	This entire high level section of wall requires insulation to be installed	5
4	Ireland	Irisys 4010	The exposed concrete wall is accelerating heat loss through conduction. This wall should be correctly insulated.	4